

Bearathon 2011

It is a sad fact that thousands of children are victims of abuse in our society. [The Teddy Bear Clinic](#) offers treatment and counseling to abused children. When they attended the clinic children receive a soft toy to comfort them on the tough journey to recovery. Thank you for helping us to ensure that there are enough bears to do this important job.



Using the pattern and instructions provided make a bear, or many bears. The bears can be made from felt, polar fleece, or any fabric scraps that are child safe. Accessorize in any way you like.

Please send your finished bears to Tin Soldiers Studio. They should reach us by 10 June. You can post bears to

Tin Soldiers Studio
PO Box 61095
Pierre van Reyneveld
0045

or deliver them in person to our studio in Irene Pretoria. Arrange delivery of your bears with Megan.

**You will find useful information about Bearathon 2011
on the Tin Soldiers Website at www.tinsoldiers.co.za.**

We are grateful for your contribution to making this project a huge success!

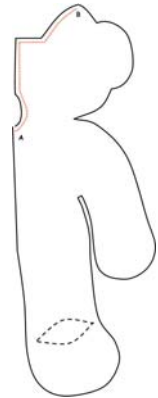
Megan
Cell: 083 305 5954
Email: soldier@lantic.net

Ina
Cell: 082 664 5446
Email: inad@egos-tech.com

Constructing Teddy

For hand and machine stitching:

- Cut a set of templates from sturdy material such as card board or an old X-Ray.
- Trace the Body Front on to fabric and cut out.
- Fold the body front in half lengthways and stitch the seam from A to B.
- There are darts in the feet. Sew them now, or omit sewing them at all if you want to save time.



If you are stitching the bear by hand:

Cut the body back from a piece of fabric and match B on the body front to B on the body back. Pin the body back and body front together and sew all around the bear leaving an opening for stuffing where indicated.

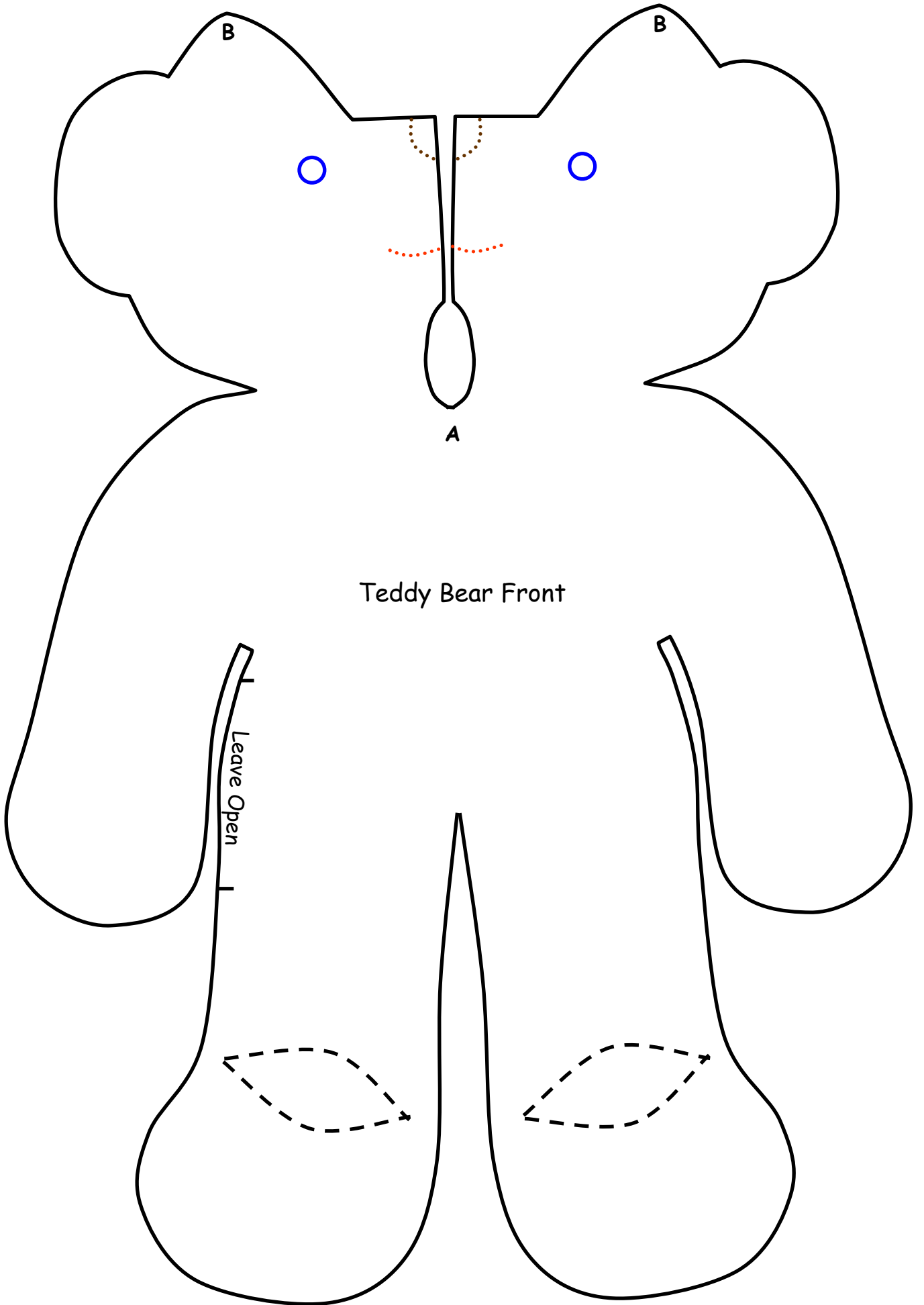
You can sew the bear on the wrong side, and turn it right side out, or sew the bear on the right side using blanket stitch or small tacking stitches. Be creative and do whatever you feel like, as long as the seams are sturdy.

If you are stitching the bear by machine:

Don't cut out the body back. Simply pin the body front on to a block of fabric and sew all the way around, leaving an opening where indicated. Once the bear is stitched, cut it out of the block of fabric and turn right side out.

For hand and machine stitching:

- Stuff the bear and sew the opening closed.
- Attach safety eyes, or beads or buttons for eyes. You can even embroider the eyes if you like.
- Attach or embroider a nose.
- Add any embellishments that take your fancy. Try to make the bears colourful and attractive to a small child, bearing in mind that it should be child safe, and all parts attached securely.



B

Teddy Bear Back

