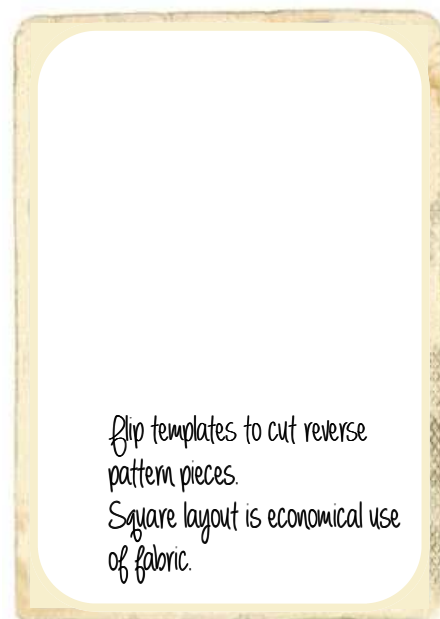


PROJECT 52—MINIATURE BEAR MAKING

Week #2



The smaller the bear is, the more important accuracy becomes. Always flip the template to cut out the reverse pattern pieces.

Laying out the pattern pieces in a square will allow the most economical use of fabric.

www.meganstinytreasures.blogspot.com

www.tinsoldiers.co.za

Have a miniature bear question? Email Megan megbear99@gmail.com